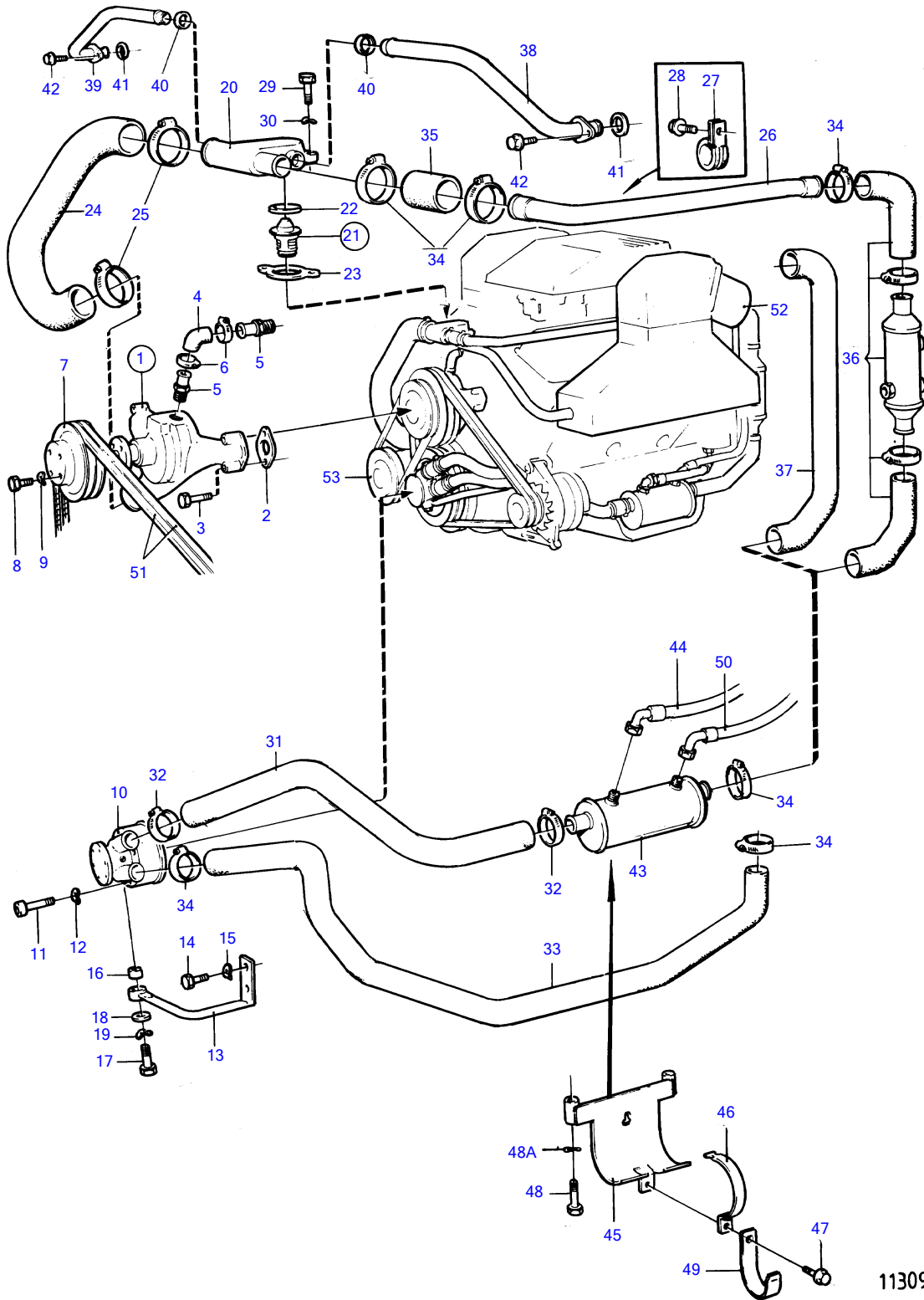


740B



11309

740B

REF	PART NO.	QTY	DESCRIPTION	SEE SEC.	NOTES
1	856609	1	Water pump • components		
2	856610	2	Gasket		
3	955536	4	Hexagon screw		
4	856611	1	Hose		
5	(856612)	2	Hose attachment		Obsolete part
6	961666	2	Hose clamp		
7	855283	1	Pulley		
8	955656	4	Hexagon screw		
9	941907	4	Spring washer		
10	856513	1	Sea water pump •	12499	
11	976644	3	Hex. socket screw		
12	942336	3	Spring washer		
13	856155	1	Bracket		Early type
	857356	1	Stay		Late type
14	940116	2	Hexagon screw		
15	941909	2	Spring washer		Early type
16	826422	1	Rubber bushing		
17	955523	1	Hexagon screw		
18	960141	1	Washer		
19	941907	1	Spring washer		Early type
20	(855993)	1	Housing		Obsolete part
21	876305	1	Thermostat kit		62°C
22	416033	1	• Sealing ring		
23	835417	1	• Gasket		
24	856262	1	Hose		
25	961671	2	Hose clamp		
26	(856310)	1	Coolant pipe		Obsolete part
27	943717	1	Clamp		
28	946440	1	Flange screw		See group 3
29	940162	2	Hexagon screw		
30	942336	2	Spring washer		
31	857051	1	Hose		Sea water pump-oljekylare
32	961669	2	Hose clamp		
33	(857048)	1	Hose		Obsolete part, Intake-sea water pump
34	961669	6	Hose clamp		
35	952973	X	Hose		L=100mm
36			hose and oil cooler for power steering		See group 6
37	856505	1	Hose		Engine with drive unit without power steering.
38	(855987)	1	Coolant pipe		Obsolete part
39	(855986)	1	Coolant pipe		Obsolete part
40	858986	2	Sealing ring		
41	842913	2	Sealing ring		
42	965175	4	Flange screw		
43		1	oil cooler		See group 2A
44		1	connection		See group 2A
45	(856263)	1	Bracket		Obsolete part
46	(856314)	1	Clamp		Obsolete part
47	946440	1	Flange screw		
48	955526	2	Hexagon screw		
48A	941907	2	Spring washer		
49	857045	1	Attaching clamp		For hose 857048.
50		1	connection		See group 2A
51	967191	1	V-belt, drive belt kit		See group 3 L=2x1275mm
52		2	exhaust manifold	12490	
53		1	servo pump		See group 6

7736260-26-12480

11309

Upd:2014-10-28